

Zx.1.2.3...Projects



Caratteristiche generali

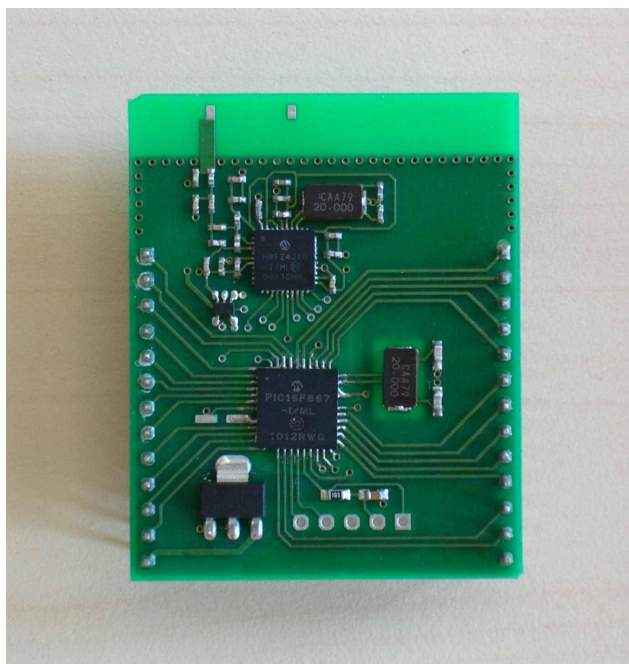
Zx:: Transceiver rf che può essere utilizzato per trasmettere/ricevere dati a radio frequenza di grandezze digitali e/o analogiche. Consente di realizzare reti di comunicazione comunque complesse in maniera semplice, eliminando completamente l'utilizzo dei cablaggi.

La frequenza portante è 2.4 GHz e il numero dei canali di ciascun modulo è pari a 16. E' possibile impostare la potenza di trasmissione di ciascun modulo (attualmente attraverso firmware).

Applicazioni

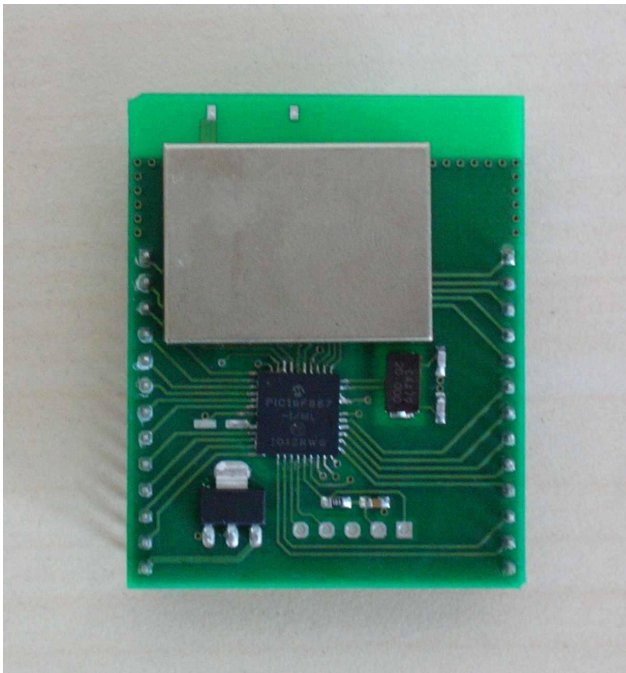
Domotica
Automazione Industriale
Telemetria

Zx1



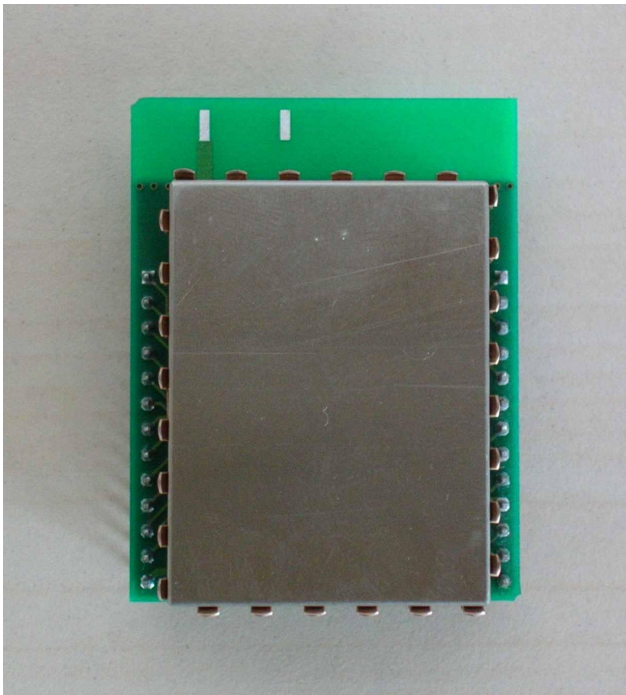
ISM Band	2.405-2.48 GHZ
Tx Output power (typical):	+0 dBm
Rx sensitivity (typical):	-95 dBm
Data rate:	250 kbps (IEEE802.15.4)
Interfaces:	Rs232/Usb
Digital I/O	20 lines
Analog I/O	2A/D lines, 10 bit
Outdoor link range	100 m (Los)
Indoor link range	30 m
Supply voltage	+5 to +12 Vdc
Antenna	chip/pcb
Dimensions	48x39x3 mm
Weight	6,5g
Temperature range	-40 ÷ +85 °C

Zx2



ISM Band	2.405-2.48 GHz
Tx Output power:	+0 dBm (typical)
Rx sensitivity (typical):	-95 dBm
Data rate:	250 kbps (IEEE802.15.4)
Interfaces:	Rs232/Usb
Digital I/O	14 lines
Analog I/O	8A/D lines, 10 bit
Outdoor link range	100 m (Los)
Indoor link range	40 m
Supply voltage	+5 to +12 Vdc
Antenna	chip
Dimensions	50x39x10 mm
Weight	7,6 g
Temperature range	-40 ÷ +85 °C

Zx3



ISM Band	2.405-2.48 GHz
Tx Output power:	(up to) +22 dBm
Rx sensitivity (typical):	*** dBm
Data rate:	250 kbps (IEEE802.15.4) / 625kbps
Interfaces:	Rs232/Usb/4 Wire SPI
Digital I/O	** lines
Analog I/O	**A/D lines, 10 bit
Outdoor link range	>500 m (Los)
Indoor link range	100 m
Antenna	PIFA/chip/sma
Dimensions	43x28x5,8 mm
Weight	13,7 g
Temperature range	-40 ÷ +85 °C
Tx current	125 mA
Rx current	23.4 mA
Sleep current mode	~2.1 µA

Zx_kit

Supply voltage:	12 Vdc
Digital outputs (red leds):	12
Digital inputs (push buttons):	12
Analog inputs (rotative trimmers):	10
Jumpers:	22
Buzzer:	1
Interfaces:	Rs232, Usb, 16x2 alphanumeric display
Software interface:	Visual Basic
Dimensions:	120x90x10 mm